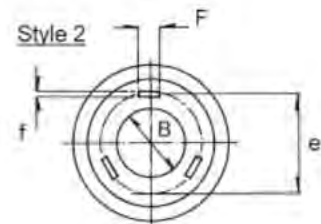
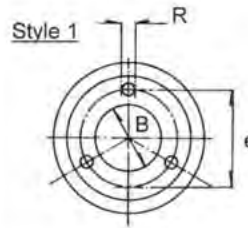
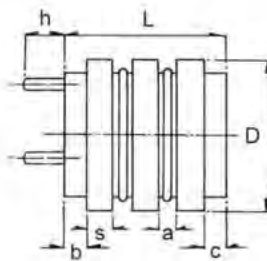


Moulded Slip Rings Assemblies 4 Ways & Above



Designed as a range of robust high speed moulded slip ring assemblies that also lend themselves to a multitude of slower and medium speed applications. Ring material is standard as phosphor-bronze grade PB1 to BS 1400. The insulation medium is thermoset glass-reinforced DMC based on unsaturated polyester resin (Grades 43-2036/597 and 43-2036/623).

Applications include: Alternators, Slip Ring Motors, Frequency Changers, Cable Reeling Drums, Cable Bunching Machines, Rotary Display Lighting, Electro-Magnetic Clutches, Wind Generators, Packaging Machines, Rotary Welding Machines, Leisure Rides and Power and Signal Transfer Packages.



Reference Number	No. of Rings	Standard Bores			Max Bore Size	Style 1 Style 2										Other Features
		D.	S.	B.		L.	a.	b.	c.	e.	R.	F x f	h.			
4 - 32 - 8 - 12	4	32	8	12	16	54.5	6	3.5	1.5	22.5	1.6	-	3	Flat insulation barrier		
4 - 40 - 9.5 - 22	4	40	9.5	22	22	50.5	3	2	1.5	27	-	5 x 1	10	Flat insulation barrier		
4 - 48 - 5 - 30	4	48	5	25 / 30	30	47	3	8	10	37.5	M 4	-	15	Raised barrier		
4 - 52 - 10 - 25.4	4	52	10	25.4	28	64	7	1	1	40	-	5 x 1	14	Terminal length includes shroud		
4 - 57 - 8 - 25.4	4	57	8	25.4	32	69.8	9.5	4.7	4.7	40	M 4	-	11	Modular construction		
4 - 60 - 10 - 25	4	60	10	25 & 30	30	78.5	7	6	11.5	40	M 5	-	15	M5 Grubscrew fixing		
4 - 60 - 10 - 28	4	60	10	28	30	73.2	7	6	6	40	M 5 or 5	-	7	Terminal length up to 20		
4 - 62 - 9.52 - 25.337	4	62	9.52	25.337	28	61.88	4.76	4.76	4.76	46	M5	-	8	Raised barrier		
4 - 70 - 10 - 34.8	4	70	10	34.8/35/31.75	38	68	6	5	4.5	48	-	10 x 1	12	Plain copper stud		
4 - 80 - 7.5 - 50	4	80	7.5	50	52	63.75	6.5	5	9.5	64	M 5	-	9	Flat insulation barrier Grubscrew fixing		
4 - 80 - 9.5 - 25.4	4	80	9.5	25/25.4/36.6	44	76	9.5	4.7	4.7	57	M 5	-	13	Keyway 3/16 " wide x 3/32 " deep Grubscrew fixing Modular construction		
4 - 102 - 12.7 - 44.3	4	102	12.7	1.734 " / 1.937 "	58	104.8	12.7	8	6.3	72.5	M 6	-	14	Keyway 3/16 " wide x 3/32 " deep Grubscrew fixing Modular construction		
5 - 48 - 5 - 30	5	48	5	25 / 30	30	55	3	8	10	38	M 3	-	10	Raised barrier		
5 - 60 - 7 - 21	5	60	7	21 / 25 / 32	32	62	5/8 "	2.5	1.5	45	M 4	-	8	Flat insulation barrier		
5 - 60 - 10 - 25	5	60	10	25	25	105.5	7	4	10	40	M 5	-	10	Raised barrier		
5 - 80 - 9.5 - 35	5	80	9.5	35	40	102	9.5	5	10	57	M 5	-	12	Raised barrier		
6 - 60 - 10 - 25	6	60	10	25	25	122.5	7	4	10	40	M 5	-	10	Raised barrier		
6 - 70 - 10 - 35	6	70	10	35	35	102	6	6	4.5	48	M 5	-	Up to 16	Raised barrier		
8 - 40 - 8 - 22	8	40	8	22	22	112	6	3	3.5	28	1.6	-	12	Flat insulation barrier		
8 - 48 - 5 - 30	8	48	5	30	30	88	3	8	10	42	M 3	-	25	Raised barrier		
8 - 60 - 10 - 25	8	60	10	25	25	158*	7	4	12	40	M 5	-	10	*Total length includes shrouded Terminal Grubscrew fixing		
10 - 48 - 5 - 25	10	48	5	25	30	96	3	8	10	38	M 3	-	12	Raised barrier		
10 - 125 - 6.5 - 70	10	125	6.5	60 / 70	75	92.5	2.5	5.5	2.5	89.75	M 4	-	10.5	Raised barrier		
10 - 125 - 12 - 70	10	125	12	70	80	155	2	4	9	102	M 5	-	15	Raised barrier		
11 - 125 - 5 - 70	11	125	5	60 / 70	75	80	2	5	2	89.75	M 4	-	15	Raised barrier		

NB. Details for 1, 2 and 3 way slip rings are shown on Data Sheet No. 8